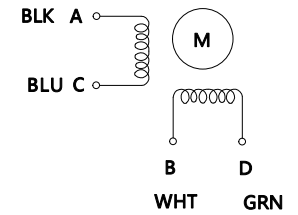


# HYBRID STEPPING MOTOR SPECIFICATION

(DIMENSIONS) unit=mm

## Wiring Diagram

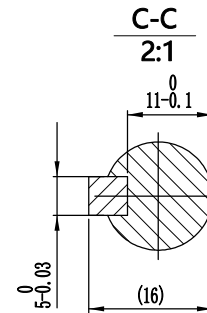
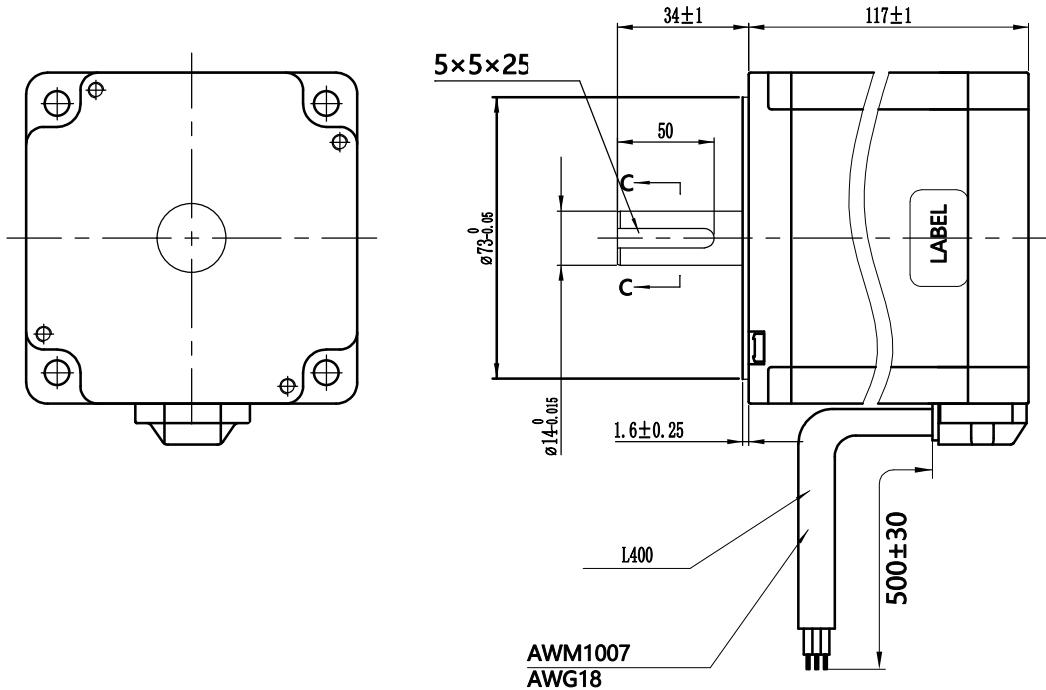


## Exciting Sequence vs. Direction of Rotation

STEP	A	B	C	D	
1	+	+	-	-	↑ CCW ↓ CW
2	-	+	+	-	
3	-	-	+	+	
4	+	-	-	+	

Clockwise view from mounting side

## Label Detail



12, Step Angle	1.8°±5%	<b>1. Holding torque testing:</b> two phase on/rated current; <b>2. Ambient temperatures :</b> -20°C ~ +50°C; <b>3. Dynamic axial load :</b> 34N Max. ; <b>4. Dynamic radial load :</b> 184N Max. @ 20mm Shaft length 20mm; <b>5. Reliability: MTBF 6000.</b> MTBF 6000 hours or more. @24V/300RPM;
11, Number of Phase	2	
10, Rated Voltage	2.7 V	
9, Rated Current/Phase	6 A Peak Value)	
8, Holding Torque	8.5 N.M	
7, Detent Torque	- g-cm	
6, Phase Resistance	0.45 Ω±0.1(20°C)	
5, Phase Inductance	4.75 mH±20%(1kHz 1V RMS)	
4, Dielectric Strength	AC 500V/ 1min / 5mA Max.	
3, Rotor Inertia	2700 g-cm²	
2, Weight	4.1 kg	
1, Insulation Class	B (130°) 80K Max.	
<b>Specifications</b>		<b>Comment</b>

REV.	ECN NO.	REVISION RECORD	DATE	TITLE	STEPING MOTOR			
DESIGN		CHECK		DWG.NO.	86EX85-14			
STANDARD		APPROVE		MATERIAL		SIZE	A4	
TECHNOLOGY		ECN SIGN		REV.	A	SCALE	1:1	SHEET 1 of 1

CUSTOMER'S MODELNO.	REV.
---------------------	------