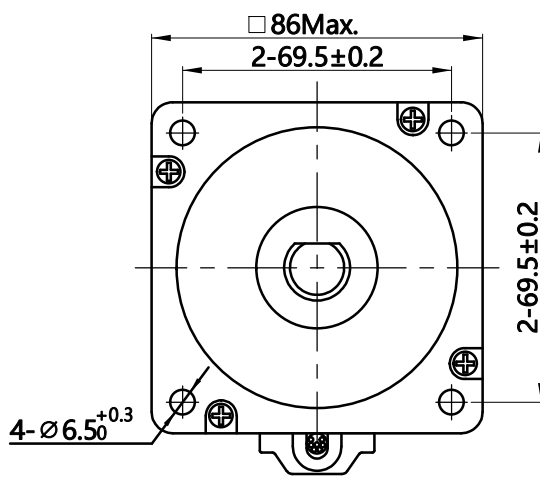
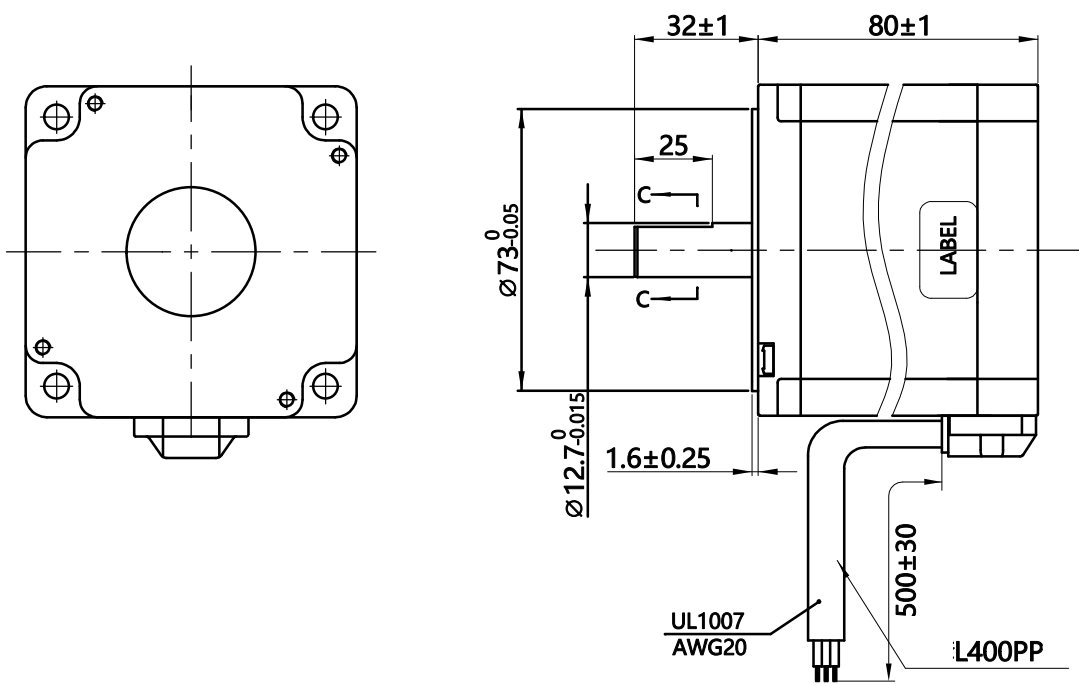
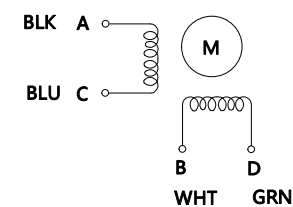


HYBRID STEPPING MOTOR SPECIFICATION

(DIMENSIONS) unit=mm



Wiring Diagram

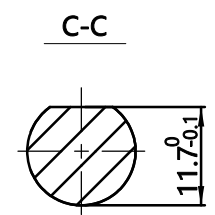
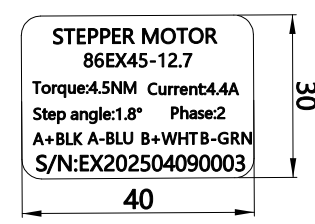


Exciting Sequence vs. Direction of Rotation

STEP	A	B	C	D	
1	+	+	-	-	CCW ↑
2	-	+	+	-	
3	-	-	+	+	
4	+	-	-	+	

Clockwise view from mounting side

Label Detail



12, Step Angle	1.8°±5%
11, Number of Phase	4
10, Rated Voltage	3.2 V
9, Rated Current/Phase	4.4 A
8, Holding Torque	4.5 N.M
7, Detent Torque	- g-cm
6, Phase Resistance	0.8 Ω±0.1(20°C)
5, Phase Inductance	3.2 mH±20%(1kHz 1V RMS)
4, Dielectric Strength	AC 500V/ 1min / 5mA Max.
3, Rotor Inertia	1400 g-cm ²
2, Weight	2.8 kg
1, Insulation Class	B (130°) 80K Max.

REV.	ECN NO.	REVISION RECORD	DATE
DESIGN		CHECK	
STANDARD		APPROVE	
TECHNOLOGY		ECN SIGN	

CUSTOMER'S MODELNO.		REV.
TITLE		STEPPING MOTOR
DWG.NO.		86EX45-12.7
MATERIAL	SIZE	A4
REV.	A	SCALE 1:2 SHEET 1 of 1

Specifications

Comment