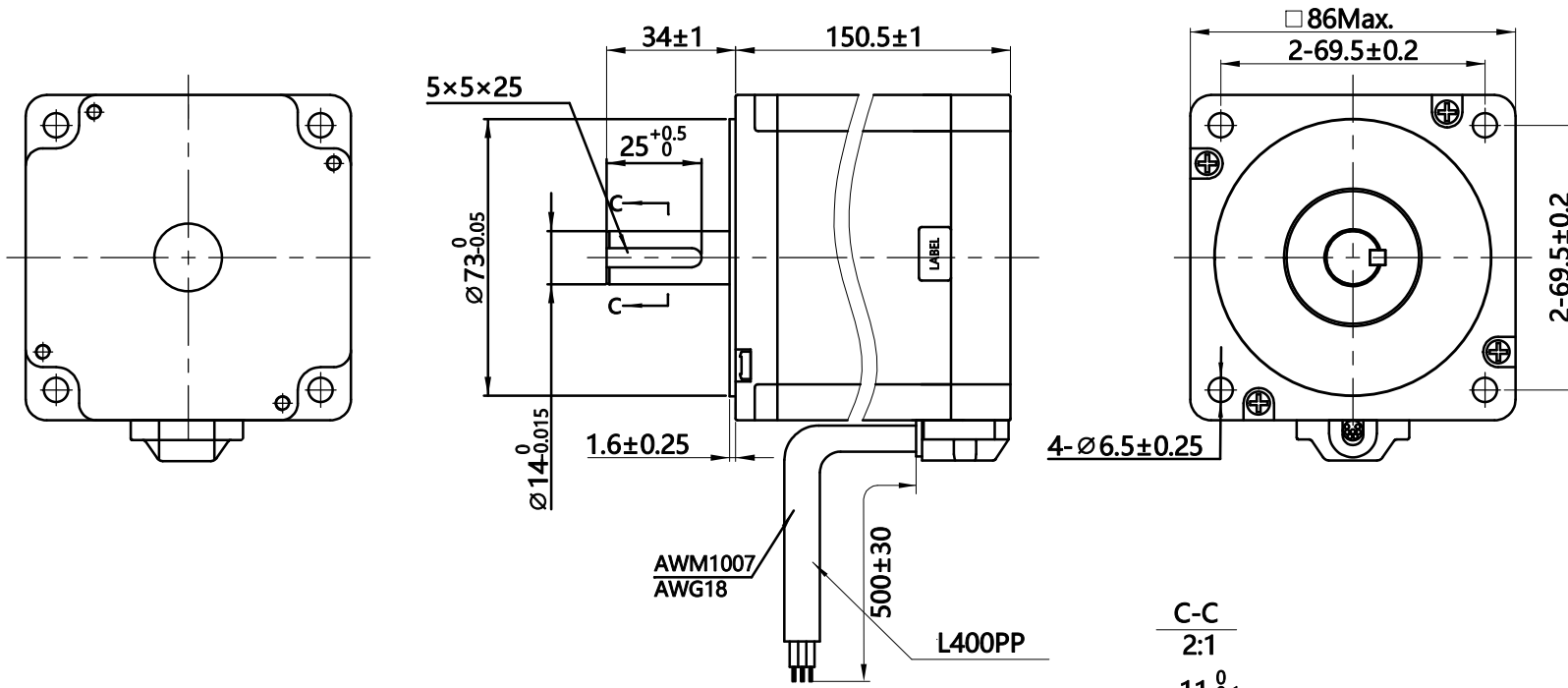
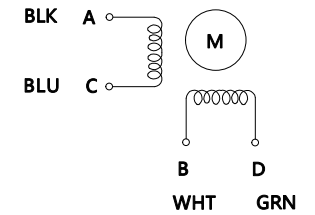


HYBRID STEPPING MOTOR SPECIFICATION

(DIMENSIONS) unit=mm



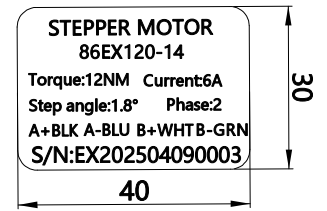
Wiring Diagram



Exciting Sequence vs. Direction of Rotation

STEP	A	B	C	D	Direction
1	+	+	-	-	CCW
2	-	+	+	-	↑
3	-	-	+	+	
4	+	-	-	+	CW

Clockwise view from mounting side



12, Step Angle	1.8°±5%	Comment
11, Number of Phase	2	
10, Rated Voltage	3.6 V	
9, Rated Current/Phase	6 A	
8, Holding Torque	12 N.m	
7, Detent Torque	- g-cm	
6, Phase Resistance	0.8 Ω±0.1(20°C)	
5, Phase Inductance	7 mH±20%(1kHz 1V RMS)	
4, Dielectric Strength	AC 500V/ 1min / 5mA Max.	
3, Rotor Inertia	4600 g-cm ²	
2, Weight	5.1 kg	
1, Insulation Class	B (130°) 80K Max.	

REV.	ECN NO.	REVISION RECORD	DATE	CUSTOMER'S MODELNO.	REV.
DESIGN		CHECK			
STANDARD		APPROVE			
TECHNOLOGY		ECN SIGN			
TITLE				STEPPING MOTOR	
DWG.NO.				86EX120-14	
MATERIAL				SIZE	A4
REV.	A	SCALE	1:1	SHEET	1 of 1