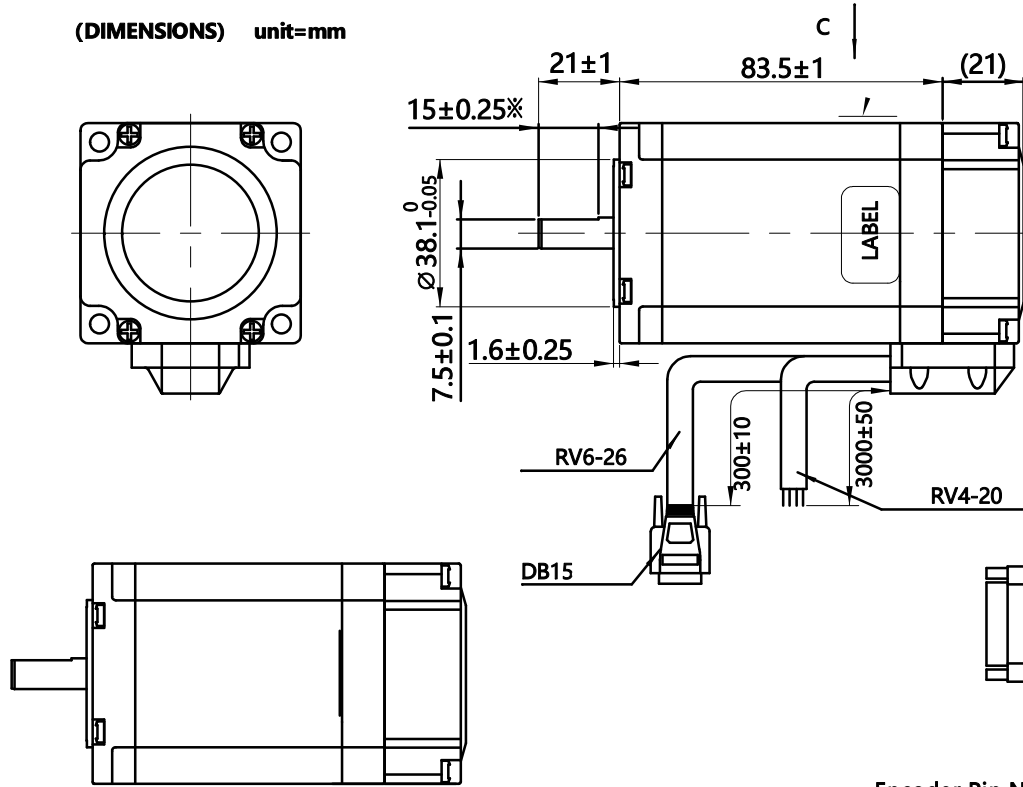
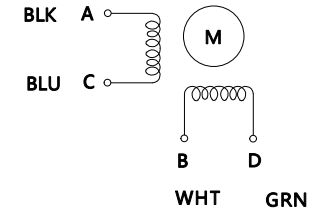


HYBRID STEPPING MOTOR SPECIFICATION

(DIMENSIONS) unit=mm



Wiring Diagram



Exciting Sequence vs. Direction of Rotation

STEP	A	B	C	D	
1	+	+	-	-	CCW ↑
2	-	+	+	-	
3	-	-	+	+	
4	+	-	-	+	

Clockwise view from mounting side

STEPPER MOTOR
57EX22-ED
 Torque:2.2NM Current:4A
 Step angle:1.8° Phase:2
 A+BLK A-BLU B+WHT B-GRN
 S/N:EX202504090003

40

30

Encoder Pin No.vs.Lead wire color

Color	TTL	DB15 Pin No.
YEL	B+	11
BLK	A+	1
RED	Vcc	2
GRN	B-	12
BLU	A-	13
WHT	GND	3

12. Step Angle	1.8°±5%
11. Number of Phase	2
10. Rated Voltage	2.28 V
9. Rated Current/Phase	4 A Peak Value)
8. Holding Torque	2.2 N.m
7. Detent Torque	- g-cm
6. Phase Resistance	0.57 Ω±0.1(20°C)
5. Phase Inductance	2.1 mH±20%(1kHz 1V RMS)
4. Dielectric Strength	AC 500V/ 1min / 5mA Max.
3. Rotor Inertia	530 g-cm ²
2. Weight	1.2 kg
1. Insulation Class	B (130°) 80K Max.

Comment

CUSTOMER'S MODELNO.	REV.
---------------------	------

REV.	ECN NO.	REVISION RECORD	DATE
DESIGN		CHECK	
STANDARD		APPROVE	
TECHNOLOGY		ECN SIGN	

TITLE	Closed Loop Stepper Motor			
DWG.NO.	Endox 57EX22-ED			
MATERIAL		SIZE	A4	
REV.	A	SCALE	1:2	SHEET 1 of 1