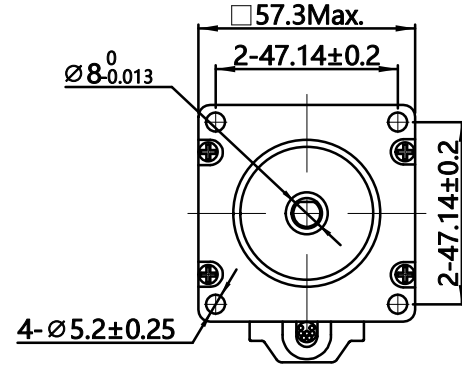
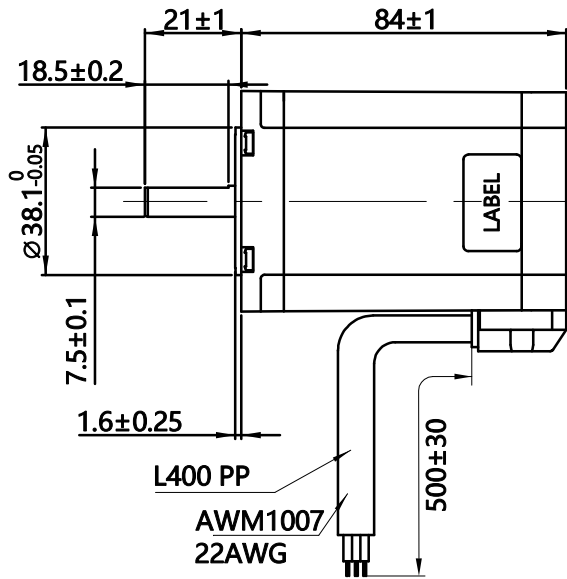
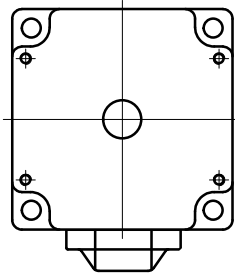
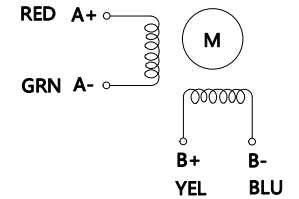


HYBRID STEPPING MOTOR SPECIFICATION

(DIMENSIONS) unit=mm



Wiring Diagram

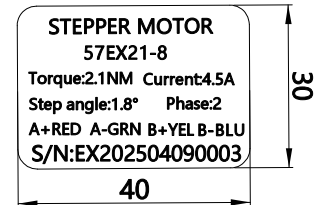


Exciting Sequence vs. Direction of Rotation

STEP	A	B	C	D	
1	+	+	-	-	CCW
2	-	+	+	-	
3	-	-	+	+	
4	+	-	-	+	CW

Clockwise view from mounting side

Label Detail



12, Step Angle	1.8°±5%	1, Holding torque testing: two phase on/rated current; 2, Ambient temperatures : -20°C ~ +50°C; 3, Dynamic axial load : 15N 4, Dynamic radial load : 75N Max.@ Shaft length 20mm; 5, Reliability: MTBF 6000 MTBF 6000 hours or more.@24V/300RPM;
11, Number of Phase	2	
10, Rated Voltage	2.6V	
9, Rated Current/Phase	4.5A	
8, Holding Torque	2.1 N.M	
7, Detent Torque	- g-cm	
6, Phase Resistance	0.57 Ω±0.1(20°C)	
5, Phase Inductance	2.1 mH±20%(1kHz 1V RMS)	
4, Dielectric Strength	AC 500V/ 1min / 5mA Max.	
3, Rotor Inertia	- g-cm ²	
2, Weight	- kg	
1, Insulation Class	B (130°) 80K Max.	
Specifications		Comment

REV.	ECN NO.	REVISION RECORD	DATE	TITLE	STEPPING MOTOR	
DESIGN		CHECK		DWG.NO.	57EX21-8	
STANDARD		APPROVE		MATERIAL		SIZE A4
TECHNOLOGY		ECN SIGN		REV.	A	SCALE 1:2 SHEET 1 of 1

CUSTOMER'S MODELNO. _____ REV. _____